



iFIX 6.0 from GE Digital

Improve operational productivity by driving decision support with High Performance visualization

High Performance HMI/SCADA increases efficiency and reduces costs

With just a glance, operators should be able to recognize which information requires their attention and what action needs to be taken. They need to know quickly what problems have arisen and how they can be addressed efficiently.

You can enable smart operators with new fourth-generation HMI/SCADA. The new [iFIX 6.0 from GE Digital](#) leverages the latest technologies that help deliver faster time to insight and greater efficiency for your operations while speeding time-to-insight for system integrators.

iFIX 6.0 offers several core enhancements to decrease deployment time, while increasing operational efficiency in a highly secure-by-design method to improve equipment uptime and reduce cost and risk. These enhancements include alarm shelving, an OPC UA server, support for long tag names and descriptions, and more.

Outcomes

- Speed response with modern screens and ISA 18.2 alarm management
- Reduce troubleshooting time with higher situational awareness, using High Performance HMI layouts and context-driven navigation based on a model structure
- Enable action anywhere, anytime with native responsive web design
- Speed up deployment through long tag names and descriptions that capture any hierarchy from your PLC
- Minimize maintenance time and costs with zero deployment clients
- Provide real-time data feeds to your supply chain through secure-by-design OPC UA communications
- Enable superior design flexibility for consumption of third-party HTML5 content



01 Increase situational awareness with modern screens and advanced alarm management

iFIX 6.0 provides new support for the ISA 18.2 alarm shelving standard, increasing efficiency by allowing operators to avoid responding to unnecessary alarms. Operators can shelve alarms directly at run-time and create up to 20 shelving policies with different shelving times for different areas of your plant. Alarms automatically unshelve when the shelve duration time expires for true plant safety.

02 Find information easily with a context-rich HMI based on the model structure

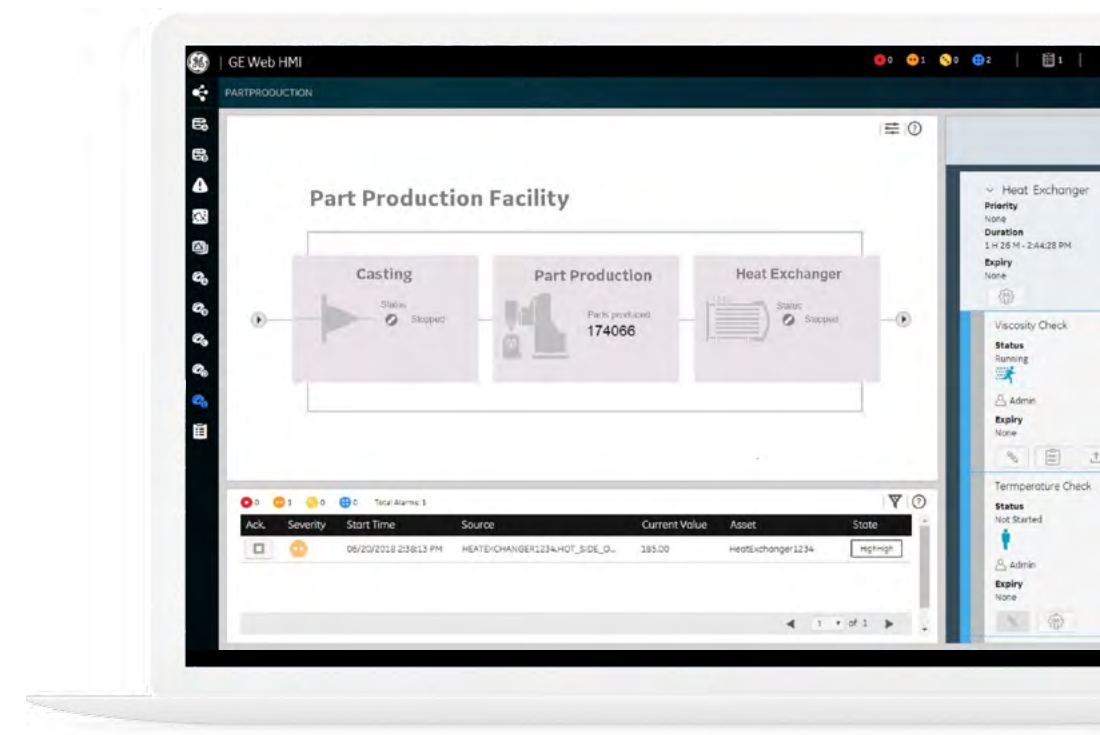
This context-rich HMI changes as the user moves through the system. Navigation is derived from the model structure built by the engineer. The context follows the asset definition and is defined only once for a class of assets. This prescribed experience provides the operator with the most relevant information—in context—and minimizes the effort to find it.

03 Reduce time to solution with High Performance HMI out of the box

To help engineers create the right user experience, iFIX 6.0 contains pre-defined objects and templates designed using High Performance HMI concepts. Effective layouts are also available out of the box. Designing your HMI has never been so easy, speeding time to solution and maintenance. iFIX 6.0 also allows assembly of graphic content using external HTML5 editors as well as automatic picture publishing for Web HMI.

04 Achieve visualization where you need it with native responsive web design

The HTML5 user interface produced using iFIX 6.0 offers native Web out of the box and supports responsive design concepts. The displays support multi-touch and can scale to adapt to various form factors.



Designed to the High Performance HMI guidelines, iFIX 6.0 improves operator decision making and speeds response.

05 Reduce risk with secure-by-design technology

iFIX leverages open and secure standards such as OPC UA, digital certificates, and Web tokens, which means you can deploy with confidence. Take advantage of GE Digital's iFIX Secure Deployment Guide for best practice recommendations.

"iFIX is the easiest way to hook to a variety of things ... We haven't found anything that iFIX couldn't overcome."

**John Franklin, Logic Systems Administrator,
Arizona Electric Power Cooperative**

iFIX 6.0 from GE Digital



Improve operational productivity by driving decision support with High Performance visualization

Features

- New in Version 6.0: ISA 18.2 alarm shelving, OPC UA server for secure-by-design client connections, long tag names and descriptions, domain caching, support for the latest Microsoft OS, and more
- Time lapse playback
- High performance Dynamos and other features at your fingertips for Efficient HMI
- Available options for high availability, alarm notification, and CFR 21 Part 11 support (eSig)
- Native Web HMI
- Structured asset model mapped to the SCADA database
- HTML5 object library for a more efficient HMI and HTML5 content generation from the workspace
- Base API to consume external HTML5 content
- Standard layouts and cards on topics such as trends, alarms, KPIs, and more
- Multi-touch alarm and trend viewer
- Local, remote over LAN, WAN, or Internet connections, including VPN
- Encrypted communication from your Web client using SSL / digital certificate, IT security friendly, and cloud ready

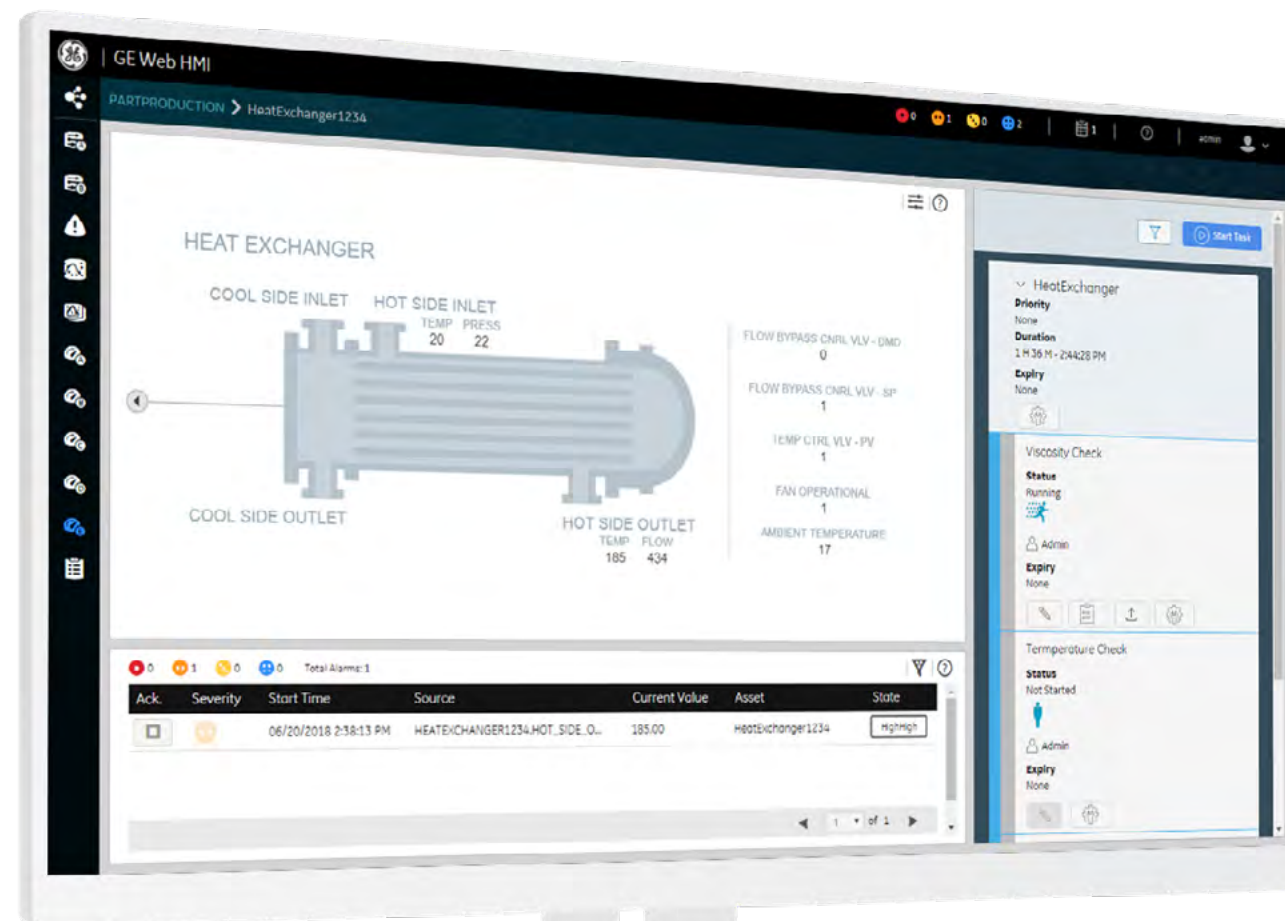
Hardware requirements

- A 2.0 GHz Intel Core2 Duo Processor or better computer. For better performance, GE Digital recommends a minimum 3 GHz computer with 4 GB memory or better is needed. Be aware that the computer must be at least dual core; a single core is not supported (with or without hyper-threading).
- A minimum of 2 GB RAM. For better performance, please consider using more.
- A minimum of 10 GB of free hard drive space for iFIX pictures, databases, alarm files, and other data files.

Software requirements

- Qualified HTML5 browsers
- One of the following operating systems:
 - Microsoft Windows 10
 - Microsoft Windows 8.1 (32-bit or 64-bit)
 - Microsoft Windows 7 Embedded Standard, Service Pack 1, for iFIX 6.0 Embedded licenses only. iFIX Embedded licenses will not run on Windows 10 IoT or other operating systems.
 - Microsoft Windows 7 (32-bit or 64-bit)
 - Microsoft Windows Server 2016
 - Microsoft Windows Server 2012 R2
- Network interface software for TCP/IP network communication and certain I/O drivers.
- An I/O driver for SCADA servers. GE Digital supplies I/O drivers for many programmable controllers.

Hardware and software requirements are representative and may vary by customer deployment. Please consult the product documentation for more details.



Today's SCADA is not just monitoring and visualization with alarms rolling in. iFIX 6.0 can optimize your operations for active decision support—enabling your team to achieve critical business outcomes.

LEARN MORE

Each window of the layout provides a different, interchangeable perspective, or view, on the displayed asset to deliver a personalized experience.

iFIX 6.0 from GE Digital



Improve operational productivity by driving decision support with High Performance visualization

Services

In the world of Industrial Internet of Things (IIoT), organizations are able to optimize productivity, reduce costs, and achieve Operational Excellence. While this is an exciting time for opportunity and growth, it can also bring on new challenges, questions, and uncertainty. No matter where you are on your IIoT journey, GE Digital has the right services offering for you.

[Advisory Services](#) We can help you plan and start your IIoT journey in a way that aligns to your specific business outcomes.

[Managed Services](#) We can help you maintain your critical machines from one of our remote locations around the world using model-based predictive-analytic technology.

[Implementation Services](#) Our experienced global Automation partners can implement a collaborative, multi-generational program that marries your existing investments to the right enhancements and technology.

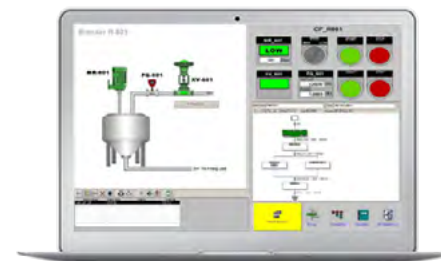
[Education Services](#) We specialize in education services to ensure that you're leveraging our solutions to the fullest extent with our training and certificate programs.

[Acceleration Plans](#) Let us help by ensuring that your business continues to operate at its highest efficiency, all while mitigating risks to your investments.

[Cyber Security Services](#) Our solutions provide industrial-grade security for a wide range of OT network and application topologies.

Related products

GE Digital's [HMI and SCADA](#) suite helps you precisely monitor, control, and visualize every aspect of your operations, enabling operators to make the best decisions faster.



[Historian](#) →

Optimize asset and plant performance through time-series industrial data collection and aggregation.

[Batch Execution](#) →

With Batch Execution, gain the security, flexibility, and ease of use you need to reduce costs, increase quality, and boost profitability.

[Workflow](#) →

Guide operators with dynamic, interactive electronic work instructions and eSOPs for more consistent operations and optimized processes.

Continue your IIoT journey

Transforming your business requires innovative foundational solutions that lay the groundwork for optimized performance.



[Plant Applications](#) →

Maximize overall equipment effectiveness (OEE), improve production scheduling, and ensure product quality by leveraging real-time production data

[Cyber Security for OT](#) →

Take the right actions to increase resilience, help ensure safety, and maintain availability across your operational technology (OT).

[Predix](#) →

Innovate and transform your business with the cloud-based operating system for the Industrial Internet, purpose-built for industry.

PREDIX

About GE

GE (NYSE: GE) is the world's Digital Industrial Company, transforming industry with software-defined machines and solutions that are connected, responsive and predictive. GE is organized around a global exchange of knowledge, the "GE Store," through which each business shares and accesses the same technology, markets, structure and intellect. Each invention further fuels innovation and application across our industrial sectors. With people, services, technology and scale, GE delivers better outcomes for customers by speaking the language of industry.

©2018 General Electric. All rights reserved. *Trademark of General Electric. All other brands or names are property of their respective holders. Specifications are subject to change without notice. 10 2018

Contact

gedigital@ge.com
www.ge.com/digital